



Pavilion 31.

Arcus Facade

Lot 4
Miller Court, Highton
VIC 3216

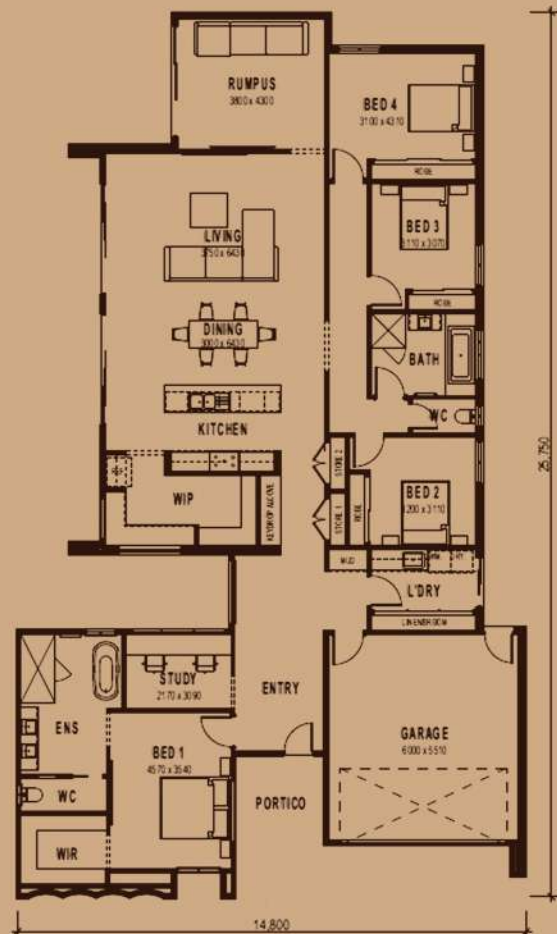
Land: 16m x 37m

Package Inclusions:

- Enso Homes silver inclusions
- Estate covenants, local gov, and BAL 12.5
- Independent quality inspector
- 2590mm ceiling height
- Double glazed windows
- LED downlights throughout
- Freestanding bath
- Stone benchtops throughout
- Square set cornice to entry, livings, and kitchen
- Solar system including panels and inverter
- Colorbond roof

Approximate house & land price
starting from: \$1,667,900

Discuss further with our
Founder and Director
Lee Selkrig
M: 0439 492 042
E: lee@ensohomes.com.au



Build your
legacy.

Bisinella
the key to your community

Disclaimer: The advertised price for this House and Land package is indicative and subject to change upon expression of interest. Visual representations are for marketing purposes and may not entirely reflect the final product. Inclusions/items are part of Enso Homes' standard inclusions and the Silver colour package. Landscaping and external elements are for illustrative purposes only. Prices are accurate at the time of publishing but may change without prior notice. The listed prices do not include stamp duty, legal fees, or other associated costs. Developers' and BAL (Bushfire Attack Level) requirements are included but subject to potential revisions. Unless specified as a fixed price, additional costs may arise due to site conditions determined by a site survey and soil test. House and land packages are contingent on land availability, which may change without notice. Please note that Enso Homes House and Land packages include a site cost allowance unless otherwise stated. For specific details, consult our New Home Specialist. This House and Land package is valid for 60 days from the publication date (25/09/2023). Enso Homes Pty Ltd (CDB-U 52506 | ABN 34 610 177 341).